



Producer: **Copeland**

Line: **ZB**

Model: **ZB30KCE-TFD**

Cooling capacity [kW]: **6.37**

Displacement [m³/h]: **11.7**

Refrigerant: **R22, R134a, R404A, R407A, R407C, R407F, R448A, R449A, R450A, R513A**

Capacity control: **None**

Power supply: **400V/3Ph/50Hz**

Data

Technical data

Displacement	[m ³ /h]	11.7
Oil charge	[l]	1.90
Oil type		POE RL32-3MAF
Internal free volume	[dm ³]	4.3
Net weight	[kg]	35.40

Electrical data and limits

Power supply		400V/3Ph/50Hz
Maximum continuous current	[A]	10.3
Locked rotor amperage	[A]	49.3
Motor resistance main	[Ω]	3.70
Maximum suction pressure	[bar]	21.0
Maximum discharge pressure	[bar]	32.0
Maximum suction temperature	[°C]	50.0
Minimum suction temperature	[°C]	-35.0

Dimensions

Suction connection thread diameter	[inch]	1 1/4
Discharge connection thread diameter	[inch]	1
Length	[mm]	242
Height	[mm]	438
Width	[mm]	242

Other

Approved refrigerants	R22, R134a, R404A, R407A, R407C, R407F, R448A, R449A, R450A, R513A
Allowed oil types	POE RL32-3MAF, POE MOBIL EAL Arctic 22 CC
Capacity control	None
Protection rating	IP21 (IEC34)

Performance

Nominal conditions: refrigerant: R404A, evaporation: -10°C (dew point), condensation: 45°C (dew point), superheating: 10K, subcooling: 0°C

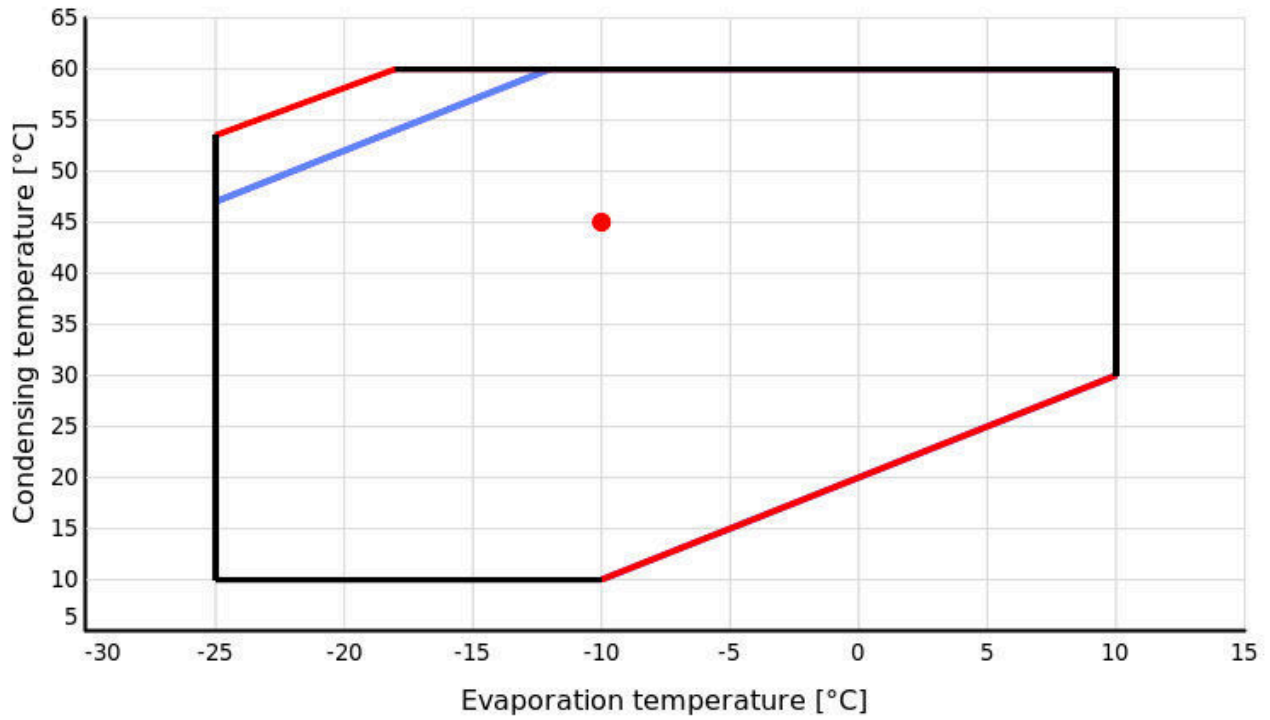
Cooling capacity

		Evaporation temperature [°C]								
		-25	-20	-15	-10	-5	0	5	7	10
Condensation temperature [°C]	10	5.71	7.10	8.73	10.64					
	15	5.40	6.72	8.28	10.10	12.19				
	20	5.07	6.33	7.81	9.53	11.53	13.81			
	25	4.73	5.91	7.31	8.95	10.84	13.02	15.49		
	30	4.37	5.48	6.79	8.34	10.13	12.19	14.55	15.57	17.20
	35	3.99	5.03	6.26	7.70	9.39	11.34	13.58	14.56	16.12
	40	3.60	4.56	5.70	7.05	8.63	10.47	12.59	13.52	15.00
	45	3.19	4.07	5.12	6.37	7.84	9.57	11.56	12.44	13.86
	50	2.77	3.57	4.53	5.67	7.03	8.64	10.51	11.34	12.69
	55		3.05	3.91	4.95	6.20	7.68	9.43	10.22	11.48
60			3.28	4.21	5.34	6.70	8.33	9.06	10.25	

Power consumption

		Evaporation temperature [°C]								
		-25	-20	-15	-10	-5	0	5	7	10
Condensation temperature [°C]	10	1.51	1.51	1.50	1.50					
	15	1.69	1.69	1.68	1.68	1.67				
	20	1.90	1.89	1.88	1.88	1.87	1.86			
	25	2.13	2.12	2.11	2.10	2.09	2.08	2.08		
	30	2.39	2.38	2.37	2.36	2.34	2.33	2.32	2.32	2.31
	35	2.68	2.68	2.66	2.65	2.63	2.61	2.59	2.59	2.58
	40	3.02	3.01	3.00	2.98	2.95	2.93	2.91	2.90	2.89
	45	3.39	3.39	3.37	3.35	3.32	3.30	3.27	3.26	3.25
	50	3.82	3.81	3.79	3.77	3.74	3.71	3.68	3.67	3.65
	55		4.28	4.27	4.24	4.21	4.17	4.14	4.12	4.10
60			4.79	4.76	4.73	4.69	4.65	4.63	4.61	

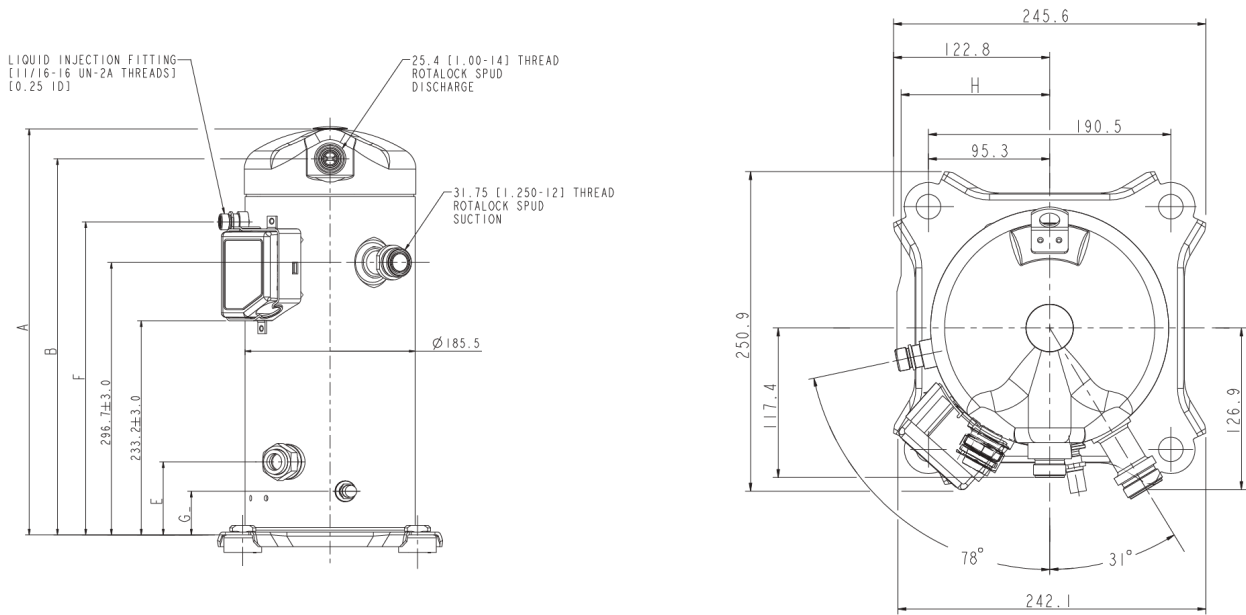
Application range



Legend

- Suction gas superheating: 10 K
- Suction gas temperature: 25°C
- Suction gas temperature: 20°C, ASERCOM certified

Dimensions



Dimensions

Dimension A	[mm]	437,7
Dimension B	[mm]	409,6
Dimension E	[mm]	79,5
Dimension G	[mm]	47,5